

## Fixed Facility (Pedestrian) *Gymnasiums, Schools, NBA/NFL Stadiums*

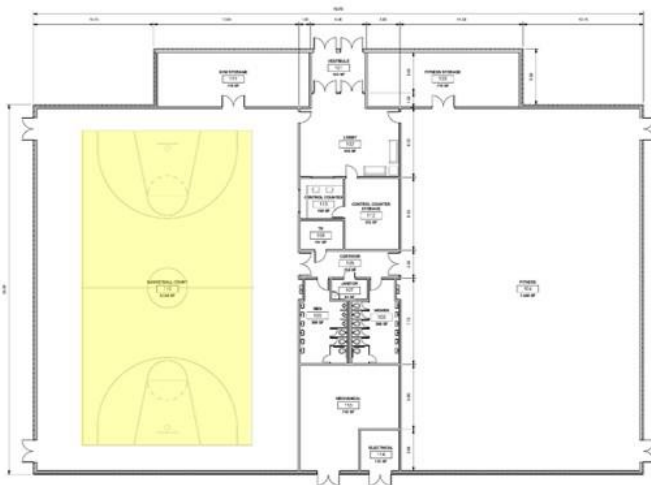
- Facility size model goal = Type 3 (1,000 vaccinations a day)
- Type 2 (3,000) and Type 3 (1,000) facility size models can be replicated side-by-side to increase throughput in existing larger facilities to create a Type 1 model (6,000 vaccinations a day).



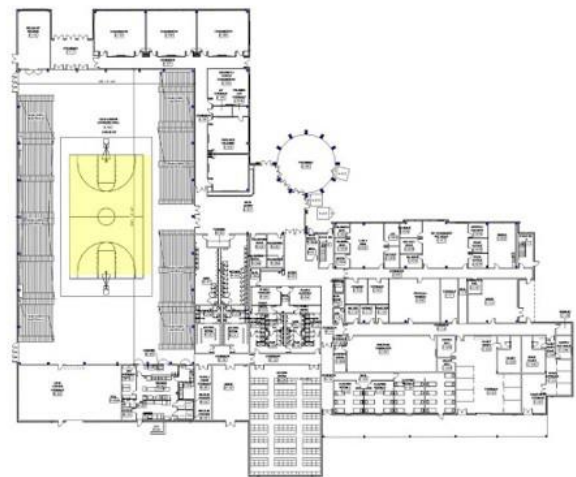
### **FACILITY CATEGORY – GYMNASIUM**



**FITNESS CENTER**



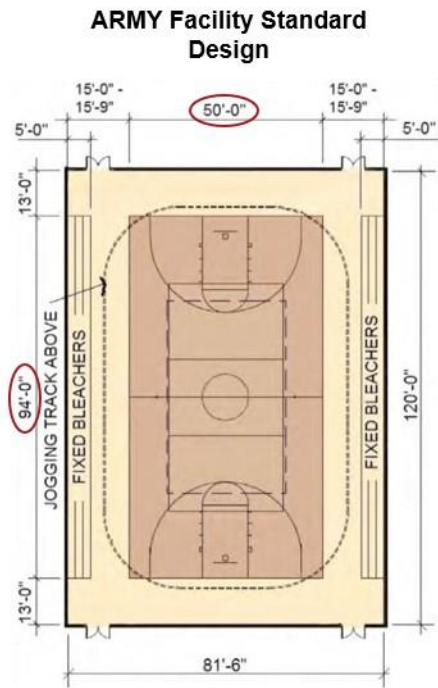
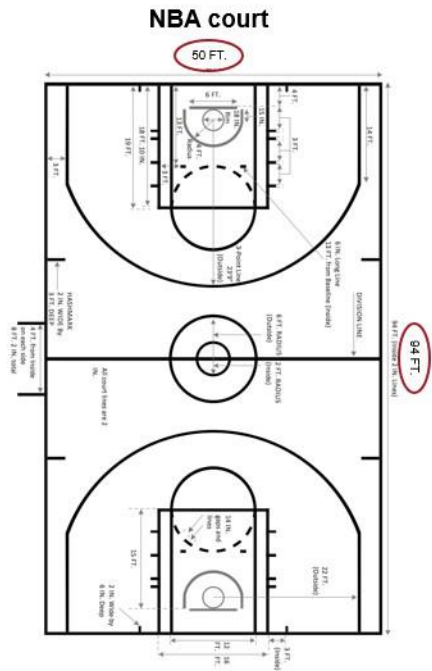
**ARMY NATIONAL GUARD  
READINESS CENTER**



REGARDLESS OF FACILITY TYPE, THE MODULE DISCUSSED IN THIS PRESENTATION CAN BE IMPLEMENTED AS LONG AS THE ADEQUATE SPACE (4,700 SF) IS MADE AVAILABLE.



# GYMNASIUM MODULE (COURT SIZE) 50' X 94' = 4,700 SF

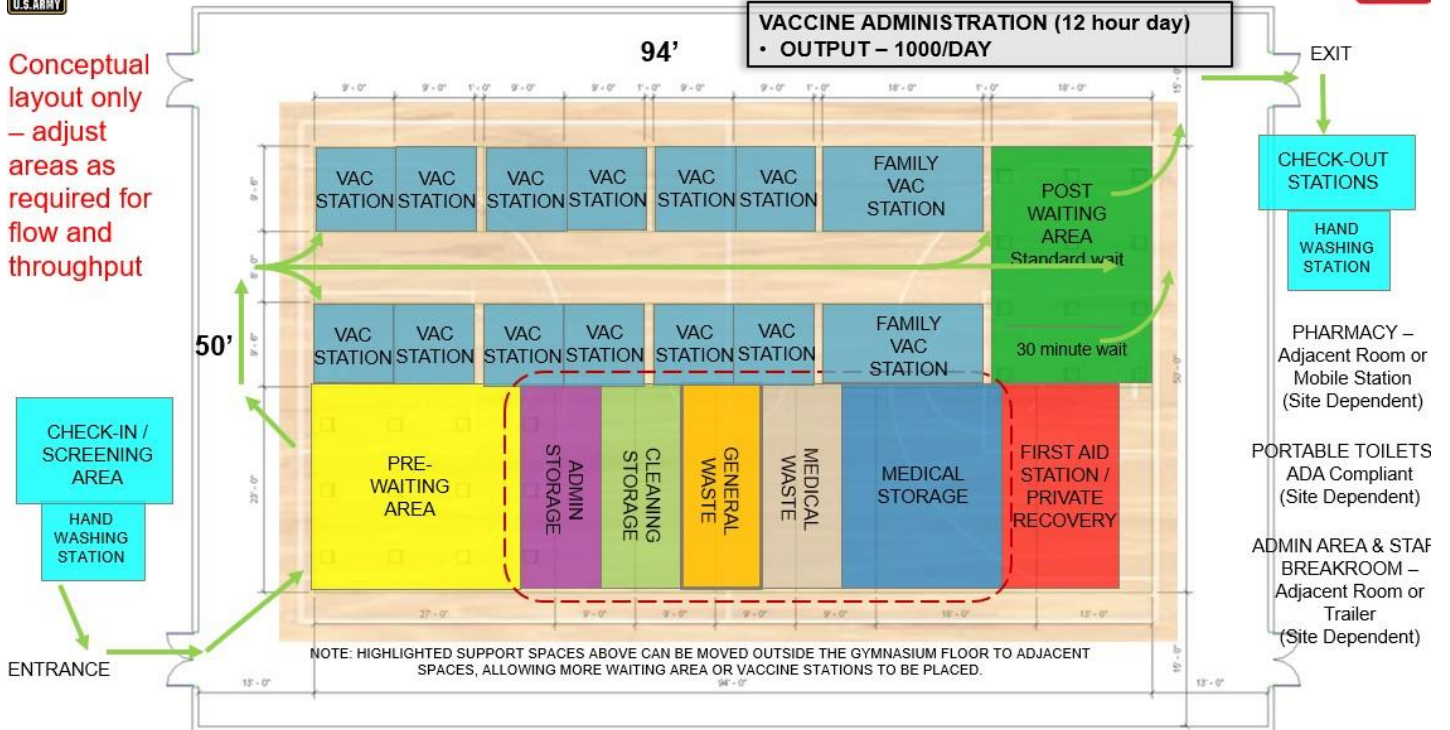




# PEDESTRIAN TYPE 2 MODULE 94' X 50' = 4700 SF



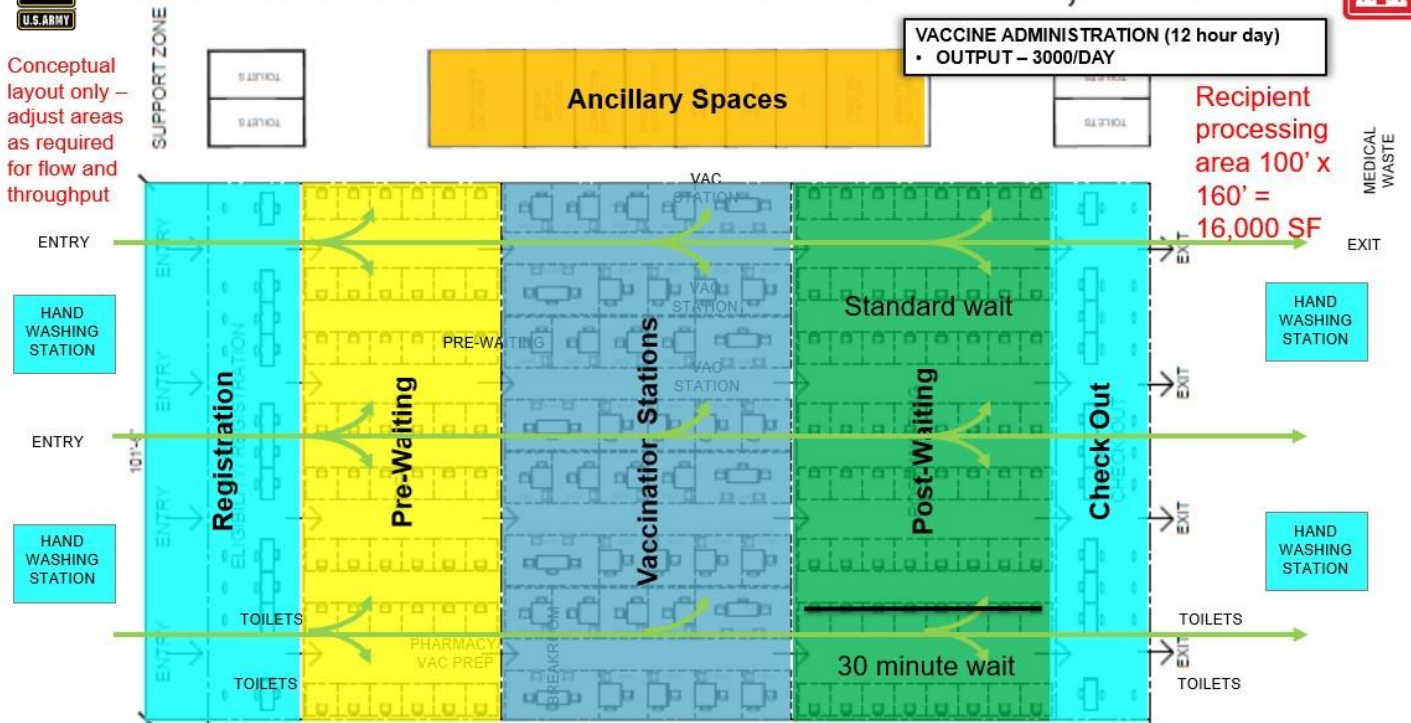
Conceptual layout only – adjust areas as required for flow and throughput



# PEDESTRIAN TYPE 2 MODULE 100' X 160' = 16,000 SF



Conceptual layout only – adjust areas as required for flow and throughput





# PEDESTRIAN TYPE 1 MODULE 160' X 360' = 57,600 SF



VACCINE ADMINISTRATION (12 hour day)  
• OUTPUT – 6000/DAY

Duplication of Type 2 model on previous slide

Football Field will accommodate

80 TOTAL VACCINATION STATIONS

Conceptual layout only – adjust areas as required for flow and throughput

